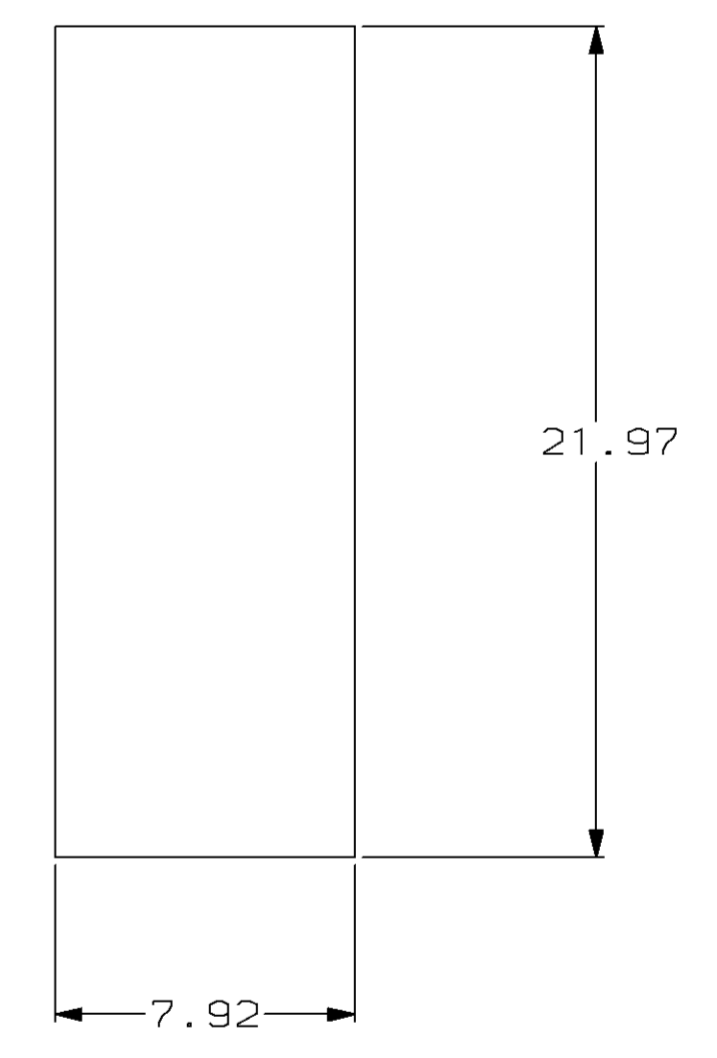
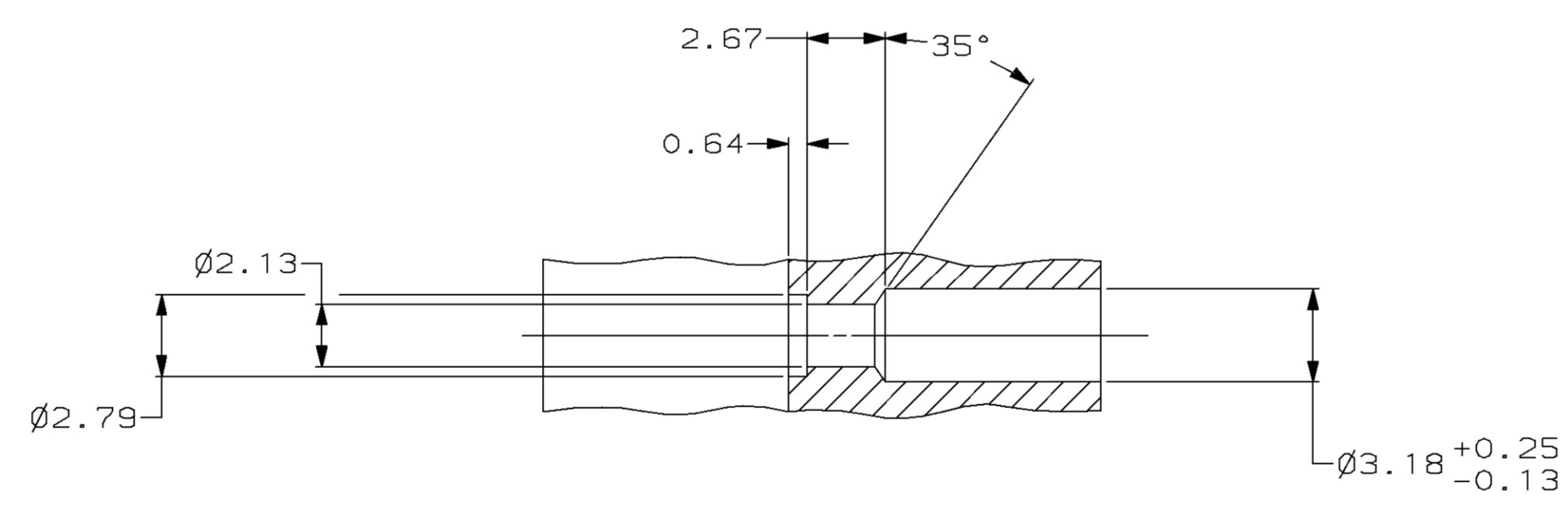
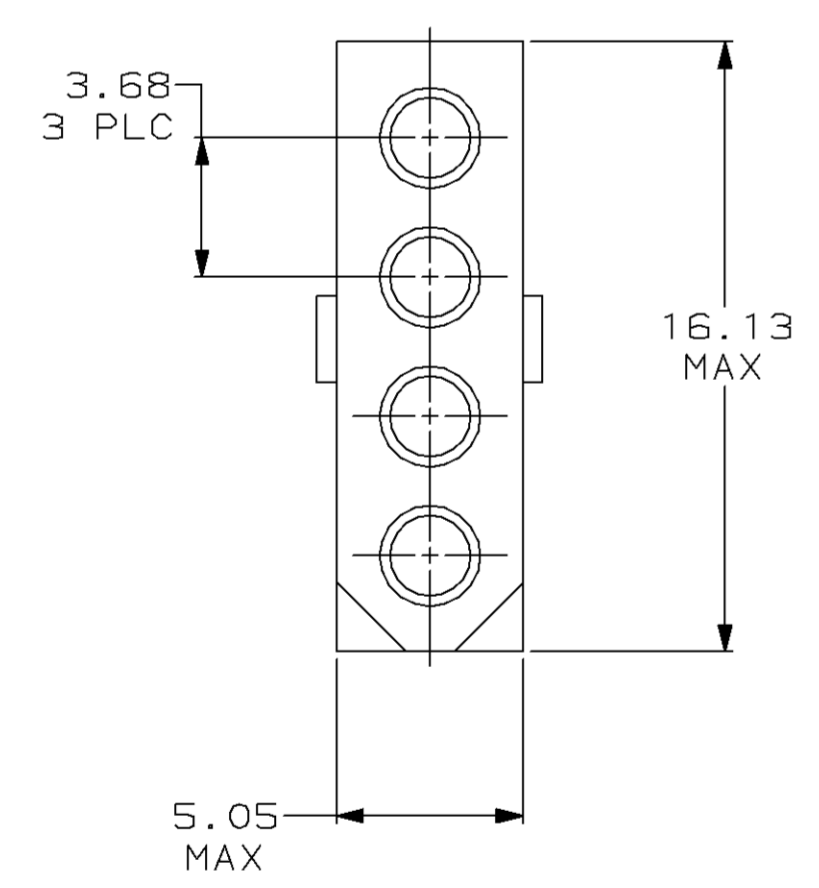
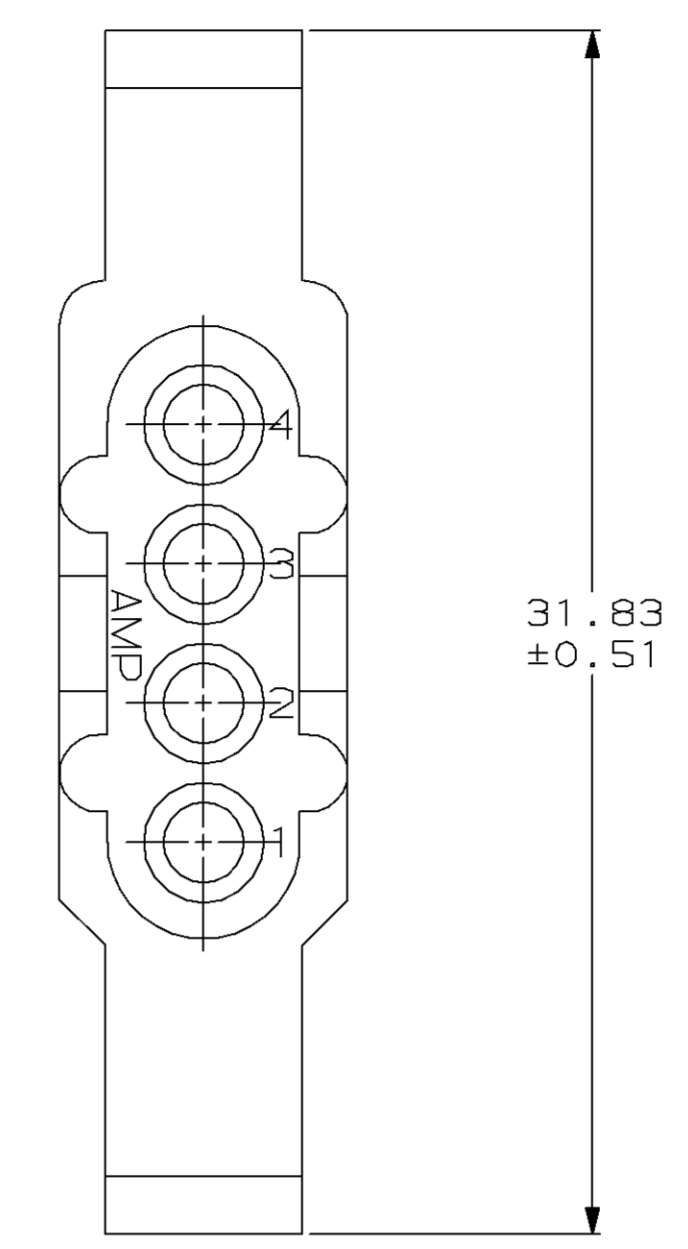
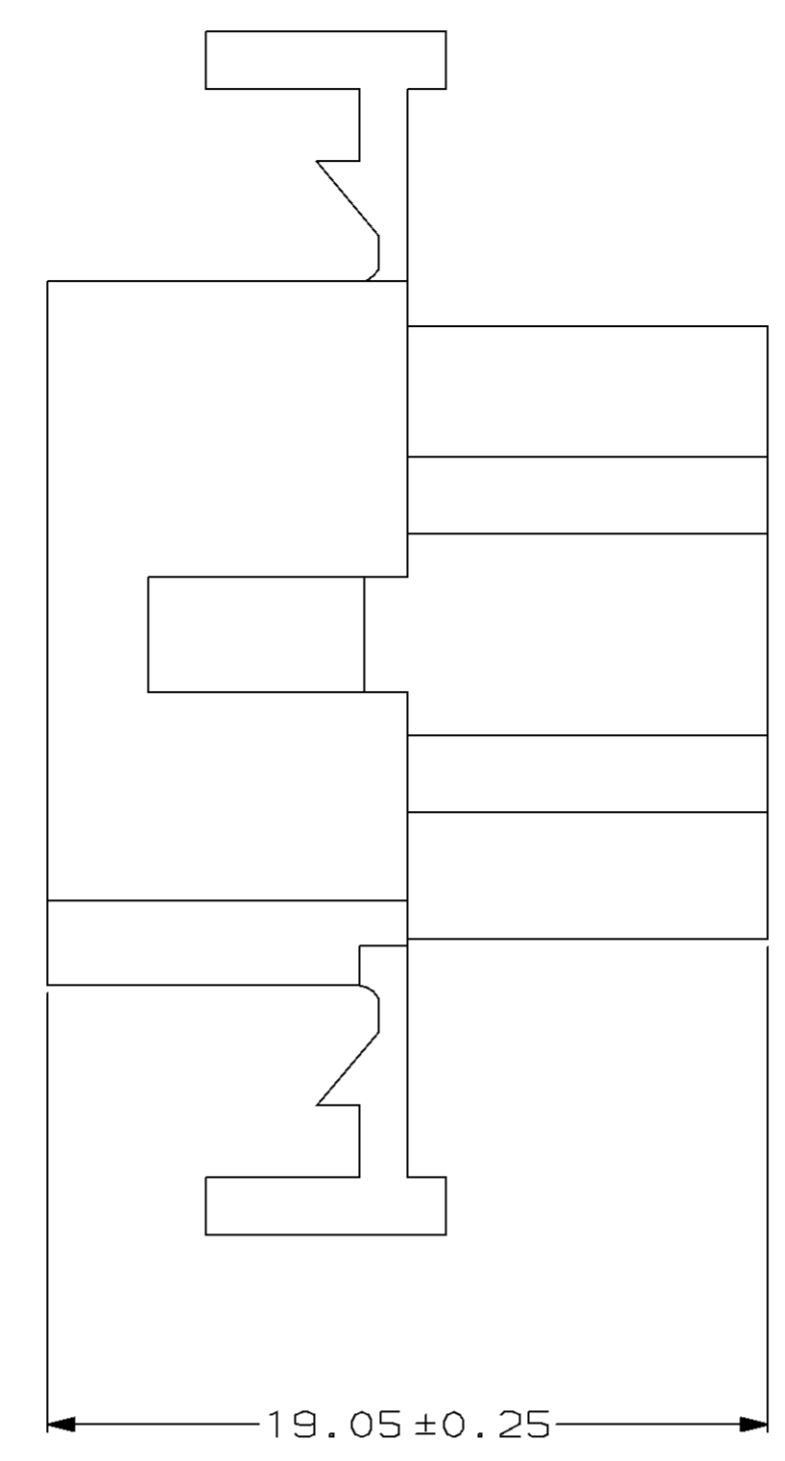
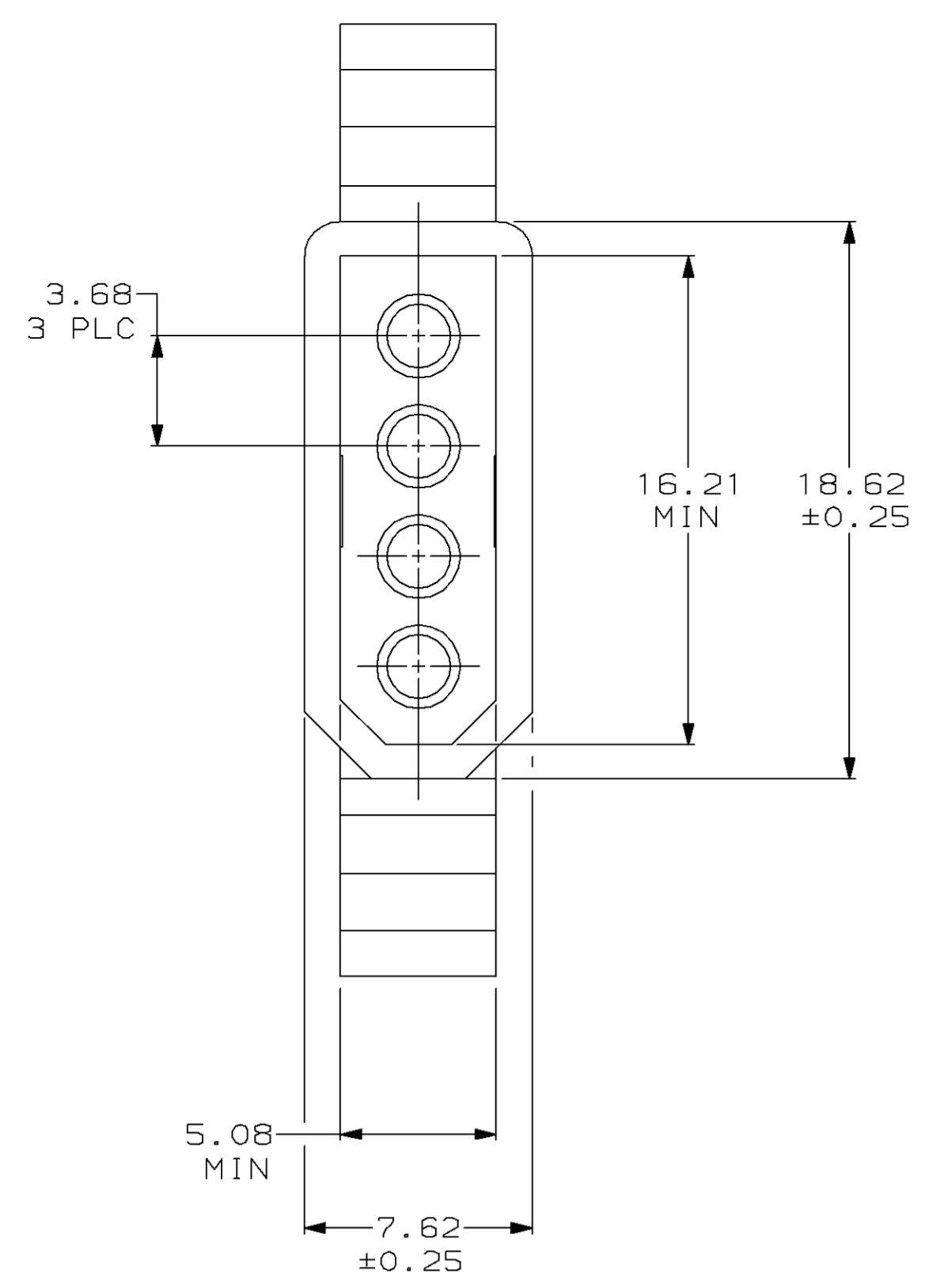
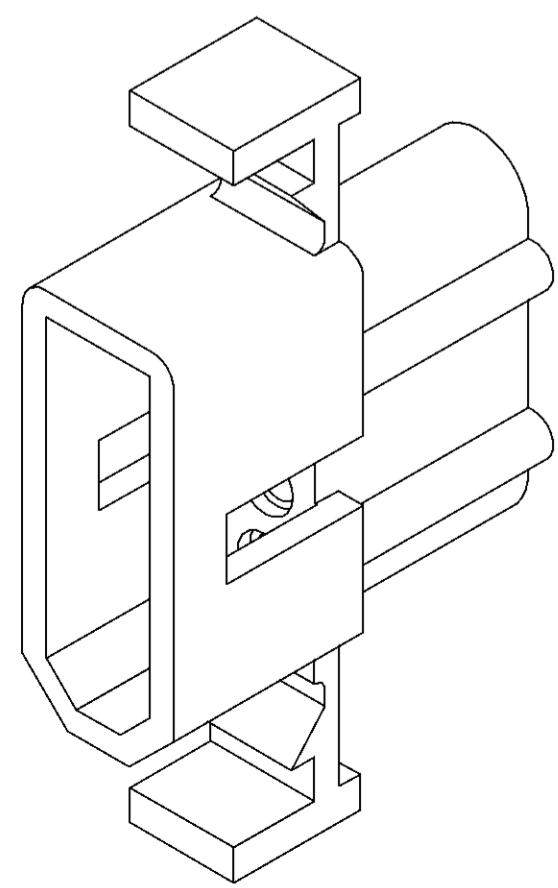


REVISIONS						
LOC	Q1ST	P	F	ZONE	LTR	DESCRIPTION
CM	53					C REV & REDWN PER CM-11
						DATE 11-4-93
						APPD KWR



TYPICAL PLUG CAVITY SECTION
(DIMENSIONS REFERENCE ONLY)

RECOMMENDED CUT OUT
FOR 1.52 MAX THICK PANEL

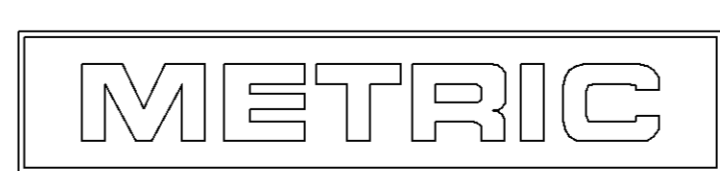


3-DIMENSIONAL MODEL
NTS

MATING CONNECTOR INTERFACE

MM	IN	MM	IN	MM	IN
2.13	.084	7.62	.300	31.83	1.253
1.57	.062	5.08	.200	21.97	.865
1.52	.060	5.05	.199	19.05	.750
0.64	.025	3.68	.145	18.62	.733
0.51	.020	3.18	.125	16.21	.638
0.25	.010	2.79	.110	16.13	.635
0.13	.005	2.67	.105	7.92	.312

CONVERSION TABLE



THIS DRAWING IS A CONTROLLED DOCUMENT FOR AMP INCORPORATED. IT IS SUBJECT TO CHANGE AND THE CONTROLLING ENGINEERING ORGANIZATION SHOULD BE CONTACTED FOR THE LATEST REVISION.

DO NOT SCALE PRINT. UNLESS SPECIFIED DIMENSIONS IN mm [INCHES] TOLERANCES ON: 2 PLC DEC ± 0.13 3 PLC DEC ± .10 ANGLES ± 1°0'		DR 11-4-93 K. WHITAKER	770334-1 PART NO		
MATERIAL NYLON, UL 94V-2 NATURAL	FINISH -	CHK 11-4-93 R. SWING	AMP Incorporated Harrisburg, PA 17105-3608		
PRODUCT SPEC -	APPLICATION SPEC -	APPD 11-4-93 C. CASH	NAME PLUG, PANEL MOUNT, 4 CIRCUIT, .062 PIN AND SOCKET		
WEIGHT -	SCALE 5:1	APPD 11-4-93 C. CASH	SIZE D	CAGE CODE 00779	DRAWING NO C-770334
			SHEET 1 OF 1		